

DEFINING WITH PROCESSES | FLAT NODE = ARGUMENTS .

- NM to send contact | diagrams .

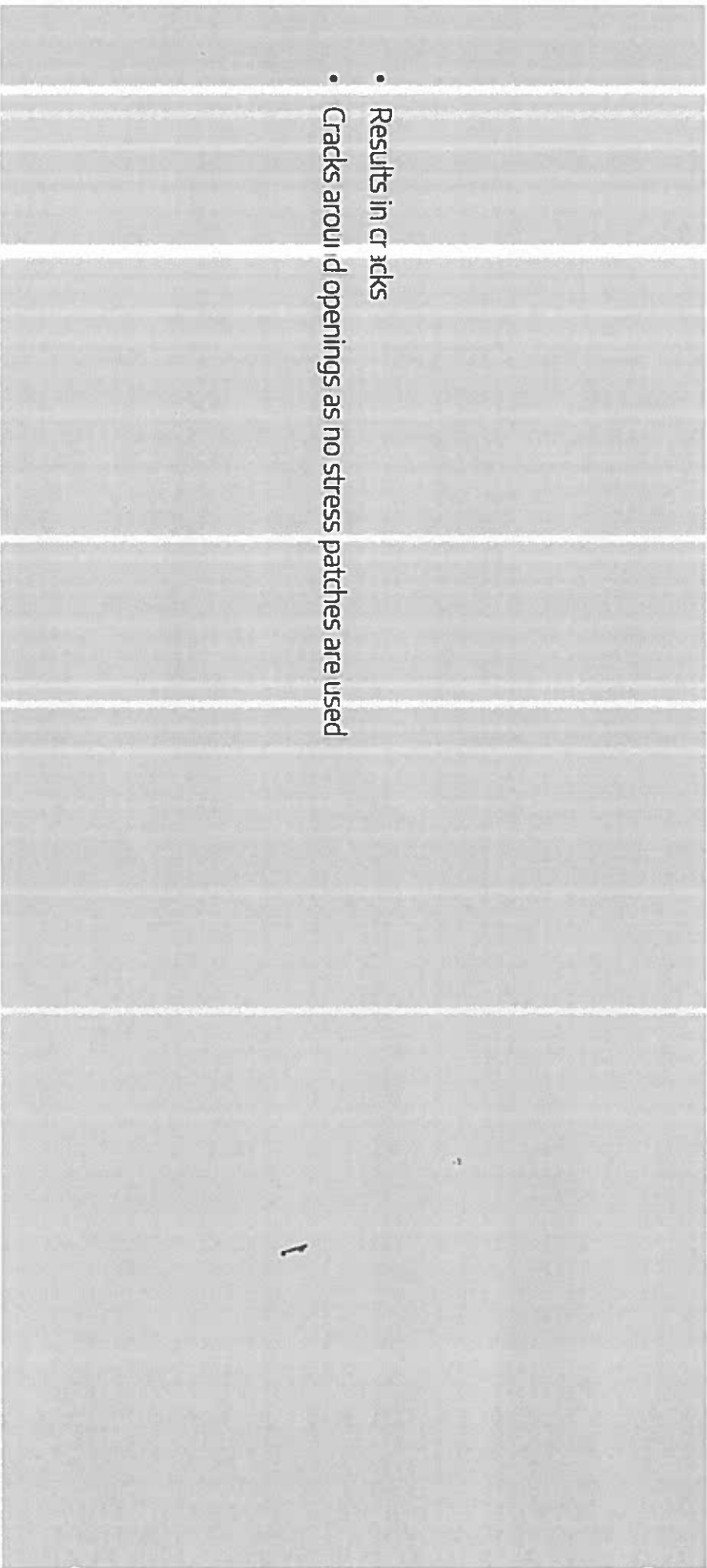


NICK

BOARDING PATTERN NOT FOLLOWED

→ NM

- Results in cracks
- Cracks around openings as no stress patches are used

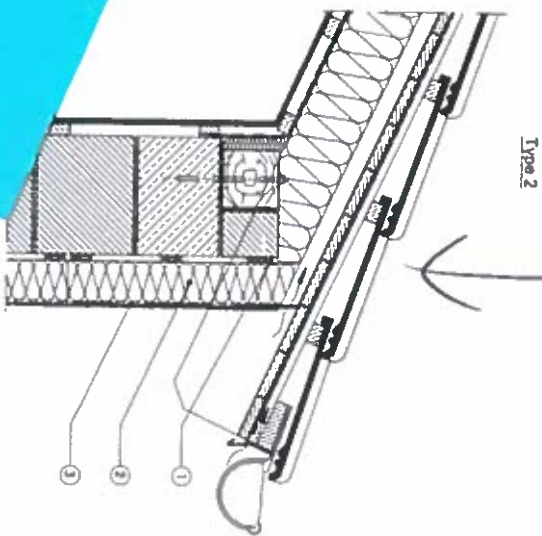


TREATMENT OF ROOF

EXISTING SCOPING WITH SURFICELUX
 VENTILATING.

updated one

- Always use capping on the top side of the insulation.
- In an ideal situation, the capping butts up to the bottom of the soffit.
- In some cases the soffit needs replacing - it is worth doing during the EWI process
- The roof car also be extended if clients prefer - not to see the capping.
- Lead flashing is required if the wall sits on top of a porch or an extension



1. Soffitlampe is extended up onto the roof eaves (lead are selected) beyond the upper edge of the insulation. The soffit is then sheathed by the soffit.

2. Soffit underneath adjustment. Basecoat and Finish.



SOIL PIPES AND DOWNPIPES

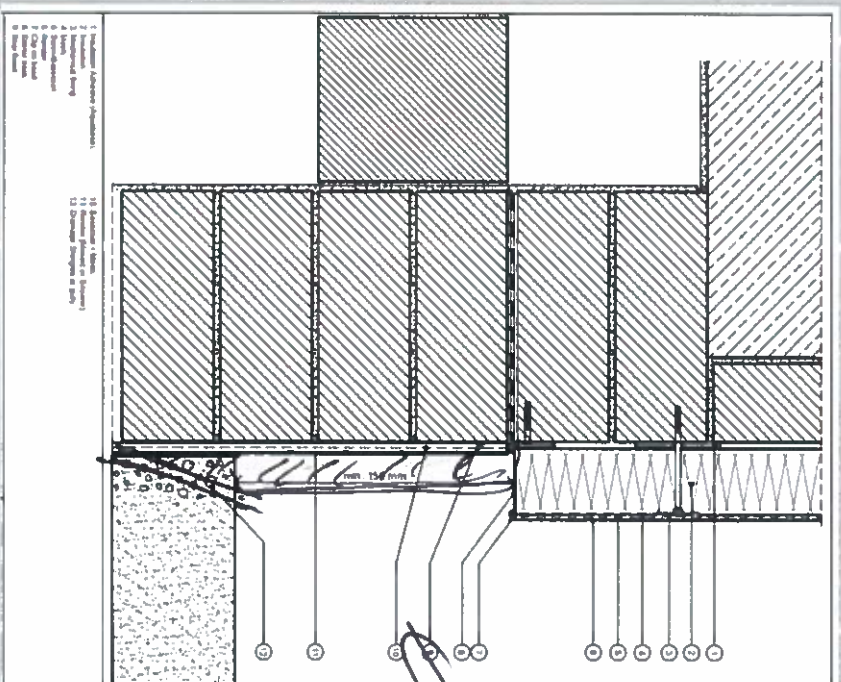
- All pipework needs to be extended so that it sits on top of the insulation.
- **Never** bury pipes.
- It's often a good idea to offer the customer pipework replacement if scaffolding is already in place.
- Ensure that the orientation of pipes stays the same to maintain normal functionality.
- **NEED TO AIRD SWIFIX DIAGRAM**

photo of pipes

NICK



DPC (DAMP PROOF COURSE)



Smart

NICE

